

Physiological Aspects

Level: 2

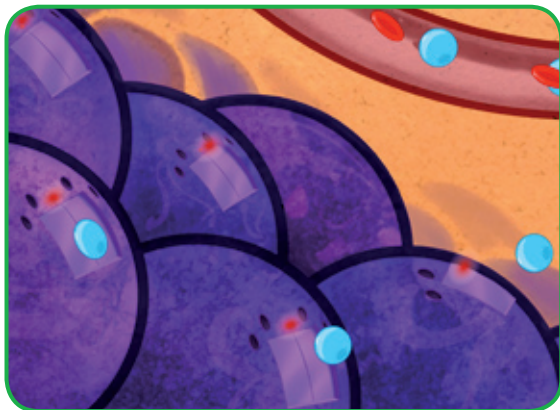
Subject: What is diabetes?

TEACHER

STUDENTS



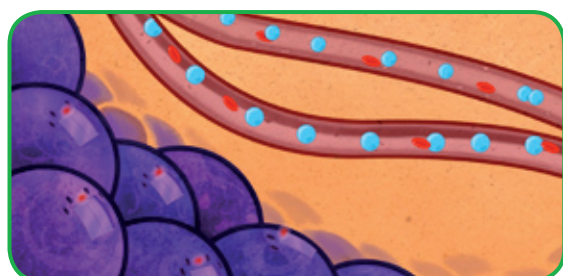
www.fundaciondiabetes.org



When somebody has **diabetes** it means their pancreas is no longer able to produce all the insulin they need.

We now know that cell doors won't open without insulin and, so, the glucose can't get into the cells.

And, while the cells don't get any glucose, they're unable to produce energy.



In the meantime, our blood is overloaded with glucose - all that glucose we got from eating! And, when glucose doesn't go where it's meant to, it harms the body.

People who've got diabetes can't produce insulin. That's why it has to be injected. If they didn't have insulin injections, they'd get very sick.

But, it's not that easy! They need to know how much to inject.

To inject too much or too little would also be dangerous.

